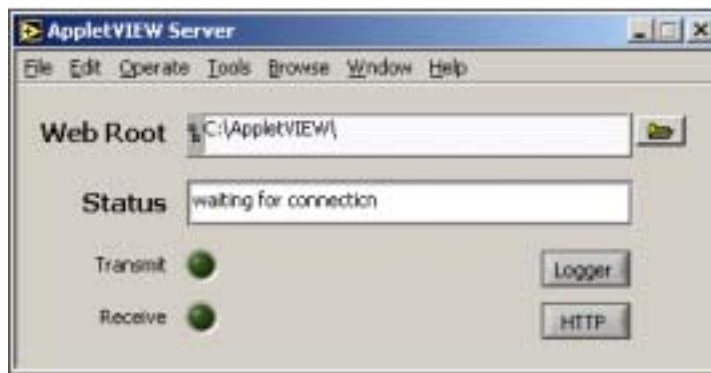


Getting Started

AppletVIEW Server

The main AppletVIEW VI is AppletVIEW.vi in the AppletVIEW.lib library. When this library is opened, the AppletVIEW Server will automatically run:



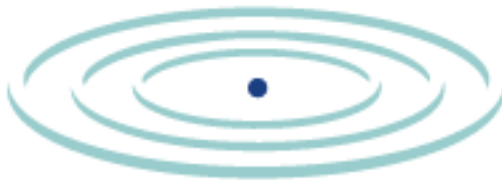
The primary function of the AppletVIEW Server is to communicate with remote applets. It uses the HTTP protocol on whatever port it is configured to use, which by default is port 8080. It supports multiple simultaneous connections, up to as many as your hardware and software configuration can allow.

In addition, the AppletVIEW has a simple web server built into it which can serve the web pages and images for your site. This is provided as a convenience only; you do not have to use the AppletVIEW Server web server. You can use the LabVIEW web server or any other web server you like. The AppletVIEW Server will still need to listen on its own port; however, in order to be able to talk to remote applets.

In addition to being able to run as a top level VI, the AppletVIEW Server can run embedded on your applications's diagram.

Configuring the Server

Setting the web root is the main requirement for running the AppletVIEW Server. The web root is the directory on your computer where you will put the html pages, images, and VIs you want to control remotely. Any VI or VI Template you want to give remote access to should be in this directory.



The first time you start the AppletVIEW Server, the web root will be set to the docs folder in the directory where you unzipped AppletVIEW. This is the web root needed to run the examples which with AppletVIEW. Once you start using AppletVIEW with your own applications, you will want to change this to point to the directory where your website and VI files are located.

To change the web root, you should stop the server (Operate -> Stop), and then set the path to where your VIs are located. Then, you should store this path as the default setting (Operate -> Make Current Values Default) and save the VI (File -> Save).

Any html pages you want the AppletVIEW Server to serve, and any Vis you want to give remote access to, must be in the web root directory.

Note that additional configuration parameters are provided by the inputs and outputs of this VI. You can set these by placing the AppletVIEW Server on the diagram of one of your own VIs and wiring the input(s).

VI's and VI Templates

The AppletVIEW Server supports two multiuser modes: "Many to One" and "Many to Many". If multiple remote users connect to your system and they all share a single VI, this is the "Many to One" mode. If multiple remote users connect to your system and they all interact with their own copy of your VI, this is the "Many to Many" mode.

Many to One

"Many to One" is the default mode in the AppletVIEW Server. When you create an applet which references a VI, when the remote applet connects to your system, it will look for the VI to already be in memory. This means it must be open and running along with the AppletVIEW VI. Each client will be able to connect to this one VI and see changes from all other clients using the same VI.

Many to Many

"Many to Many" mode is supported by the use of VI Templates. If you have an existing VI for which you want each client to operate their own copy, you should save a copy of your VI as a template in the web root directory. The remote applet will reference this template file (instead of the original VI file), and every time a client connects a new version will be loaded into memory for the client.

When you exit LabVIEW, it will ask you whether you want to save the run time versions created from the template. It is not necessary to do so.